



MELISSA HOFF ROTH, PA  
LEA PLOTKIN, LLC

954-817-8401 | 954-802-8451 | melissa@melissahoffpa.com | www.parklandpowerteam.com



4846 NW 103rd Way | Coral Springs  
3 beds • 2 baths • Approximately 2,500 sqft.

BEAUTIFUL HOME IN CENTRALLY LOCATED BROOKSIDE ISLE! PRIVATE LOCATION. WELL-MAINTAINED COMMUNITY WITH POOL. VERY LOW HOA FEES. OPEN AIRY SPLIT-BEDROOM FLOOR PLAN, WITH SCREENED IN PATIO JUST OFF OF THE VERY LARGE, UPDATED KITCHEN. UPDATED & UPGRADED BATHROOMS & ALL APPLIANCES INCLUDING A/C IN 2015. NEWER ROOF IN 2008 WITH SEPARATE LAUNDRY ROOM. ACCORDION SHUTTERS AND PLANTATION SHUTTERS ENHANCE THE HOME. EXPANDED BRICK PAVED DRIVEWAY & CUTE FRONT ENTRY PATIO. ENJOY WALKING TO GREAT SCHOOLS, PARKS AND SHOPS. CLOSE TO ALL OF THE MAJOR HIGHWAYS. \*EXCLUDE WASHER & DRYER.

For more information, contact:

**Melissa Hoff Roth and Lea Plotkin**

954-817-8401 | 954-802-8451

melissa@melissahoffpa.com | leaplotkin@gmail.com

www.parklandpowerteam.com | www.southfloridaluxuryhometeam.com



Lea Plotkin

Melissa Hoff Roth



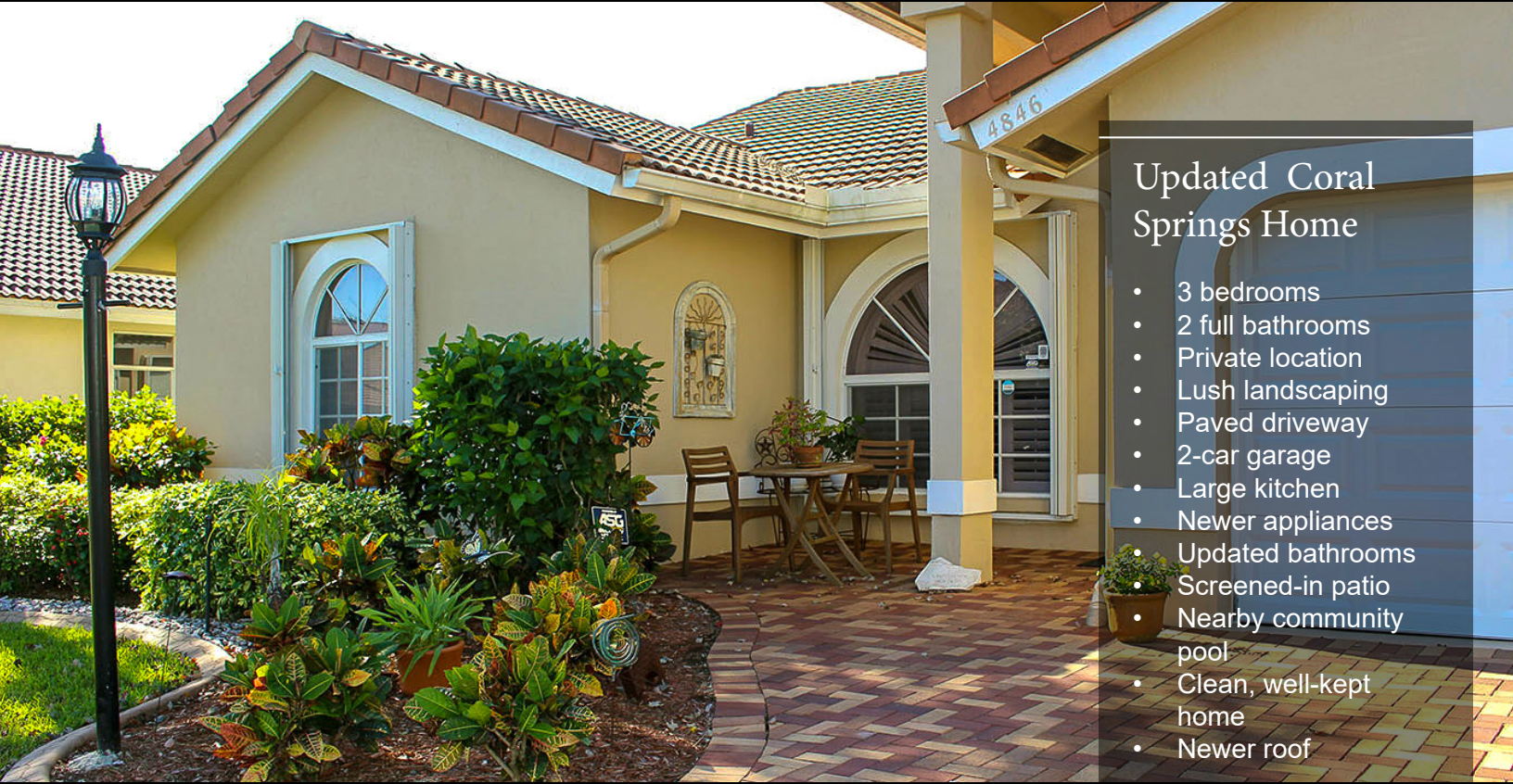
GLOBAL LUXURY



MELISSA HOFF ROTH, PA  
LEA PLOTKIN, LLC



954-817-8401 | 954-802-8451 | melissa@melissahoffpa.com | www.parklandpowerteam.com



## Updated Coral Springs Home

- 3 bedrooms
- 2 full bathrooms
- Private location
- Lush landscaping
- Paved driveway
- 2-car garage
- Large kitchen
- Newer appliances
- Updated bathrooms
- Screened-in patio
- Nearby community pool
- Clean, well-kept home
- Newer roof

